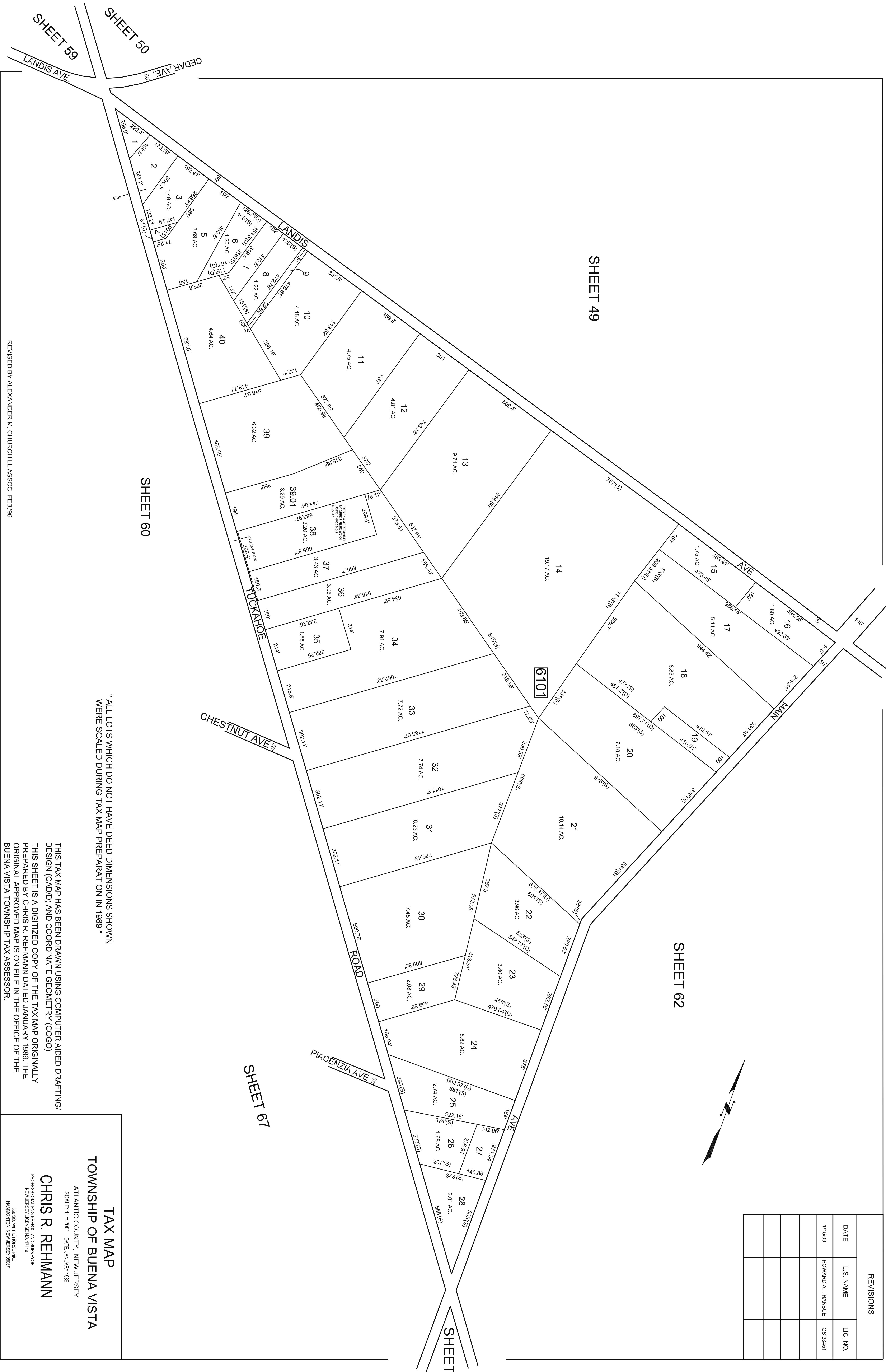
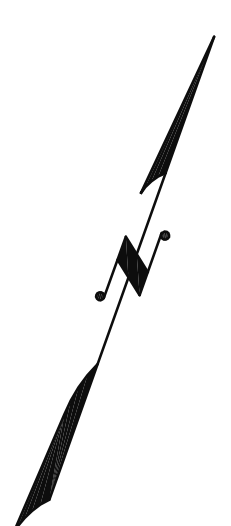


REVISIONS		
DATE	L.S. NAME	L.I.C. NO.
1/15/09	HOWARD A. TRANSUE	GS 32451



" ALL LOTS WHICH DO NOT HAVE DEED DIMENSIONS SHOWN WERE SCALED DURING TAX MAP PREPARATION IN 1989 "

SHEET 59
SHEET 50

SHEET 60

SHEET 49

SHEET 62

SHEET 67

SHEET 66

REVISED BY ALEXANDER M. CHURCHILL ASSOC.-FEB.'96

THIS TAX MAP HAS BEEN DRAWN USING COMPUTER AIDED DRAFTING/ DESIGN (CAD/D) AND COORDINATE GEOMETRY (COGO)
THIS SHEET IS A DIGITIZED COPY OF THE TAX MAP ORIGINALLY PREPARED BY CHRIS R. REHMANN DATED JANUARY 1989. THE ORIGINAL APPROVED MAP IS ON FILE IN THE OFFICE OF THE BUENA VISTA TOWNSHIP TAX ASSESSOR.

TAX MAP
TOWNSHIP OF BUENA VISTA

ATLANTIC COUNTY, NEW JERSEY
SCALE: 1" = 200' DATE: JANUARY 1989

CHRIS R. REHMANN
PROFESSIONAL ENGINEER & LAND SURVEYOR
NEW JERSEY LICENSE NO. 17119
865 SO. WHITE HORSE PINE
HAMMONTON, NEW JERSEY 08037



REVISIONS		
DATE	L.S. NAME	L.I.C. NO.

SHEET 49

SHEET 48

SHEET 61

REVISED BY SSCCE -7.02 MAR '98, OCT '98
 REVISED BY CHURCHILL - MAR '98, OCT '98
 REVISED BY ALEXANDER/M. CHURCHILL ASSOC. - JUNE '95, OCT '98

SHEET 67

SHEET 66

TAX MAP
TOWNSHIP OF BUENA VISTA
 ATLANTIC COUNTY, NEW JERSEY
 SCALE: 1" = 200' DATE: JANUARY 1989
CHRIS R. REHMANN
 PROFESSIONAL ENGINEER & LAND SURVEYOR
 NEW JERSEY LICENSE NO. 17119
 865 SO. WHITE HORSE PINE
 HAMMONTON, NEW JERSEY 08037

THIS SHEET IS A DIGITIZED COPY OF THE TAX MAP ORIGINALLY PREPARED BY CHRIS R. REHMANN DATED JANUARY 1989. THE ORIGINAL APPROVED MAP IS ON FILE IN THE OFFICE OF THE BUENA VISTA TOWNSHIP TAX ASSESSOR.

SHEET 65

YOST RD.

HAWTHORNE AVE.

SHEET 62

WHITETAIL

AVE

CONRAL (FORMERLY PENN READING SEASHORE LINE) CAPE MAY BRANCH

CLASS I

700

19

45

7102

45

7102

7102

7102

7102

7102

7102

2291(S)

2291(S)

2291(S)

2291(S)

2291(S)

2291(S)

2291(S)

2291(S)

2291(S)

2291(S)

2291(S)

2291(S)

2291(S)

2291(S)

2291(S)

2291(S)

2291(S)

2291(S)

2291(S)

2291(S)

2291(S)

2291(S)

2291(S)

2291(S)

2291(S)

2291(S)

2291(S)

2291(S)

2291(S)

2291(S)

1 6.42 Ac.

2 6.6 Ac.

3 6.6 Ac.

4 19.81 Ac.

5 6.6 Ac.

6 48.22 Ac.

7 6.6 Ac.

8 11.09 Ac.

9 40.5 Ac.

10 40.08 Ac.

11 156.4'

12 9.82 Ac.

13.01 4.86 Ac.

13.02 4.86 Ac.

13.03 4.86 Ac.

13.04 4.86 Ac.

13.05 4.86 Ac.

13.06 4.86 Ac.

13.07 4.86 Ac.

13.08 4.86 Ac.

13.09 4.86 Ac.

13.10 4.86 Ac.

13.11 4.86 Ac.

13.12 4.86 Ac.

13.13 4.86 Ac.

13.14 4.86 Ac.

13.15 4.86 Ac.

13.16 4.86 Ac.

13.17 4.86 Ac.

13.18 4.86 Ac.

14 9.71 Ac.

15 9.71 Ac.

16 4.86 Ac.

17 4.86 Ac.

18 14.08 Ac.

19 4.38 Ac.

20 4.9 Ac.

21 4.9 Ac.

22 4.9 Ac.

23 4.9 Ac.

24 4.9 Ac.

25 4.9 Ac.

26.01 4.86 Ac.

26.02 4.86 Ac.

26.03 4.86 Ac.

26.04 4.86 Ac.

27 9.71 Ac.

28 9.71 Ac.

29* 2.41 Ac.

30 31.58 Ac.

31 4.47 Ac.

32 9.43 Ac.

33 4.72 Ac.

34 4.72 Ac.

35 14.57 Ac.

36 4.72 Ac.

37 4.72 Ac.

38 4.72 Ac.

39 4.72 Ac.

40 4.72 Ac.

41 4.72 Ac.

42 4.72 Ac.

43 4.72 Ac.

44 4.25 Ac.

45 5.53 Ac.

46 5.53 Ac.

47 5.53 Ac.

48 5.53 Ac.

49 5.53 Ac.

50 5.53 Ac.

51 5.53 Ac.

52 5.53 Ac.

53 5.53 Ac.

54 5.53 Ac.

55 5.53 Ac.

56 5.53 Ac.

57 5.53 Ac.

58 5.53 Ac.

59 5.53 Ac.

60 5.53 Ac.

61 5.53 Ac.

62 5.53 Ac.

63 5.53 Ac.

64 5.53 Ac.

65 5.53 Ac.

66 5.53 Ac.

67 5.53 Ac.

68 5.53 Ac.

69 5.53 Ac.

70 5.53 Ac.

71 5.53 Ac.

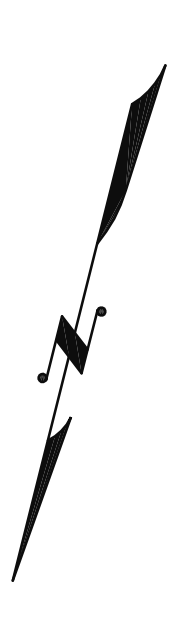
72 5.53 Ac.

73 5.53 Ac.

74 5.53 Ac.

SHEET 47

SHEET 64



NOTE:
 RE: LOTS 8, 9 & 45
 THE OVERLAPPING LINES & DIMENSIONS SHOWN ARE PLOTTED
 IN ACCORDANCE WITH THE METES & BOUNDS DESCRIPTIONS
 APPEARING IN THE LAST DEED OF RECORD FOR EACH PARCEL &
 DO NOT PURPORT TO REPRESENT TITLE OR OWNERSHIP STATUS
 IN ANY MANNER. THESE SITUATIONS ARE SUBJECT TO SOLUTIONS
 BY THE PROPERTY OWNERS CONCERNED.

REVISIONS		
DATE	L.S. NAME	L.I.C. NO.

TAX MAP
 TOWNSHIP OF BUENA VISTA
 ATLANTIC COUNTY, NEW JERSEY
 SCALE: 1" = 200' DATE: JANUARY 1989

CHRIS R. REHMANN
 PROFESSIONAL ENGINEER & LAND SURVEYOR
 NEW JERSEY LICENSE NO. 17119
 865 50 WHITE HORSE PINE
 HANMONTON, NEW JERSEY 08037

THIS TAX MAP HAS BEEN DRAWN USING COMPUTER AIDED DRAFTING/
 DESIGN (CAD/D) AND COORDINATE GEOMETRY (COGO)

HAMILTON TOWNSHIP
 ATLANTIC COUNTY
 REVISIED BY CHURCHILL - OCT. 1981, JAN. 1999

* = EXEMPT-BUENA VISTA TOWNSHIP

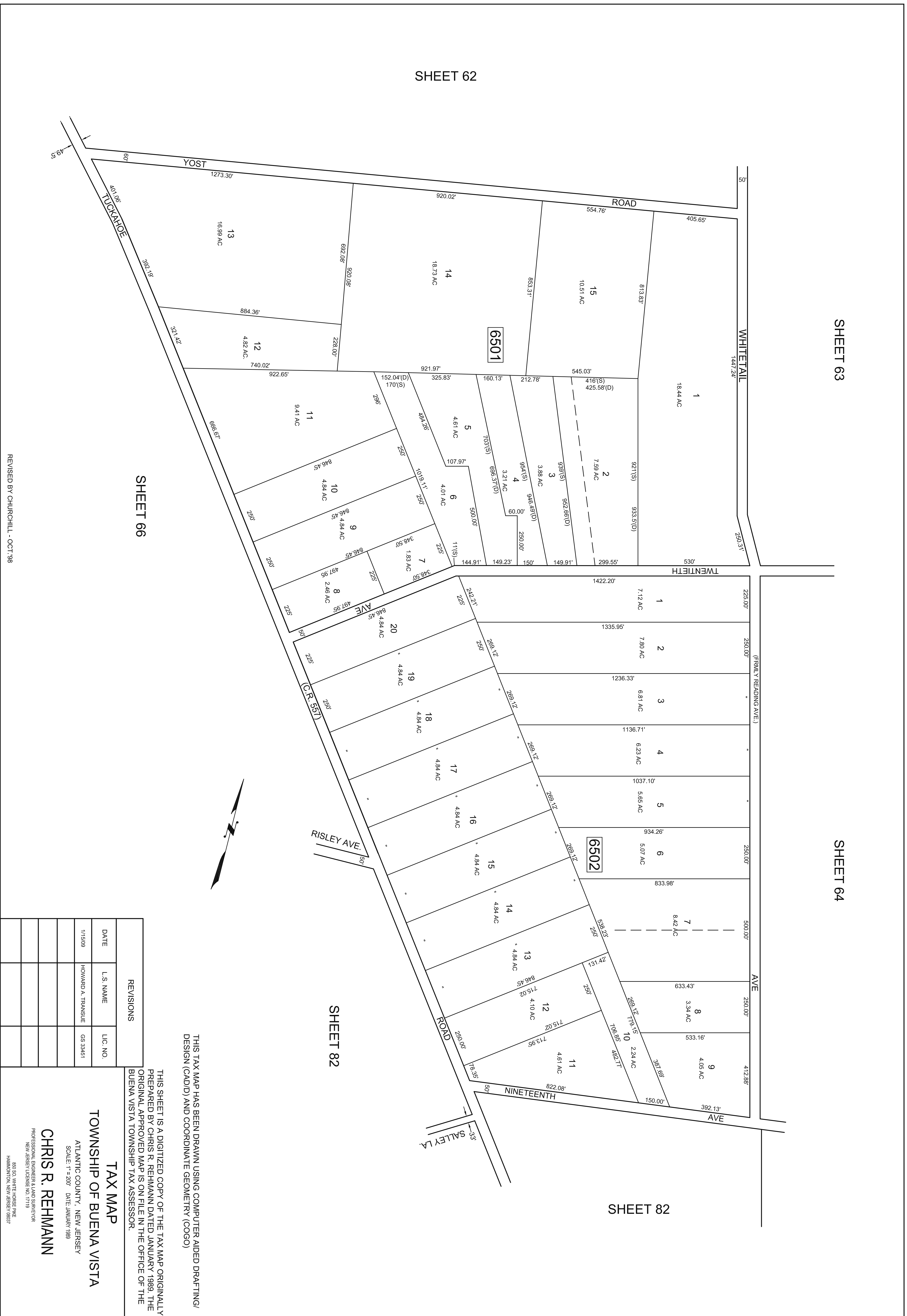
THIS SHEET IS A DIGITIZED COPY OF THE TAX MAP ORIGINALLY
 PREPARED BY CHRIS R. REHMANN DATED JANUARY 1989. THE
 ORIGINAL APPROVED MAP IS ON FILE IN THE OFFICE OF THE
 BUENA VISTA TOWNSHIP TAX ASSESSOR.

SHEET 63

SHEET 64

SHEET 82

SHEET 62



THIS TAX MAP HAS BEEN DRAWN USING COMPUTER AIDED DRAFTING/ DESIGN (CAD/D) AND COORDINATE GEOMETRY (COGO)

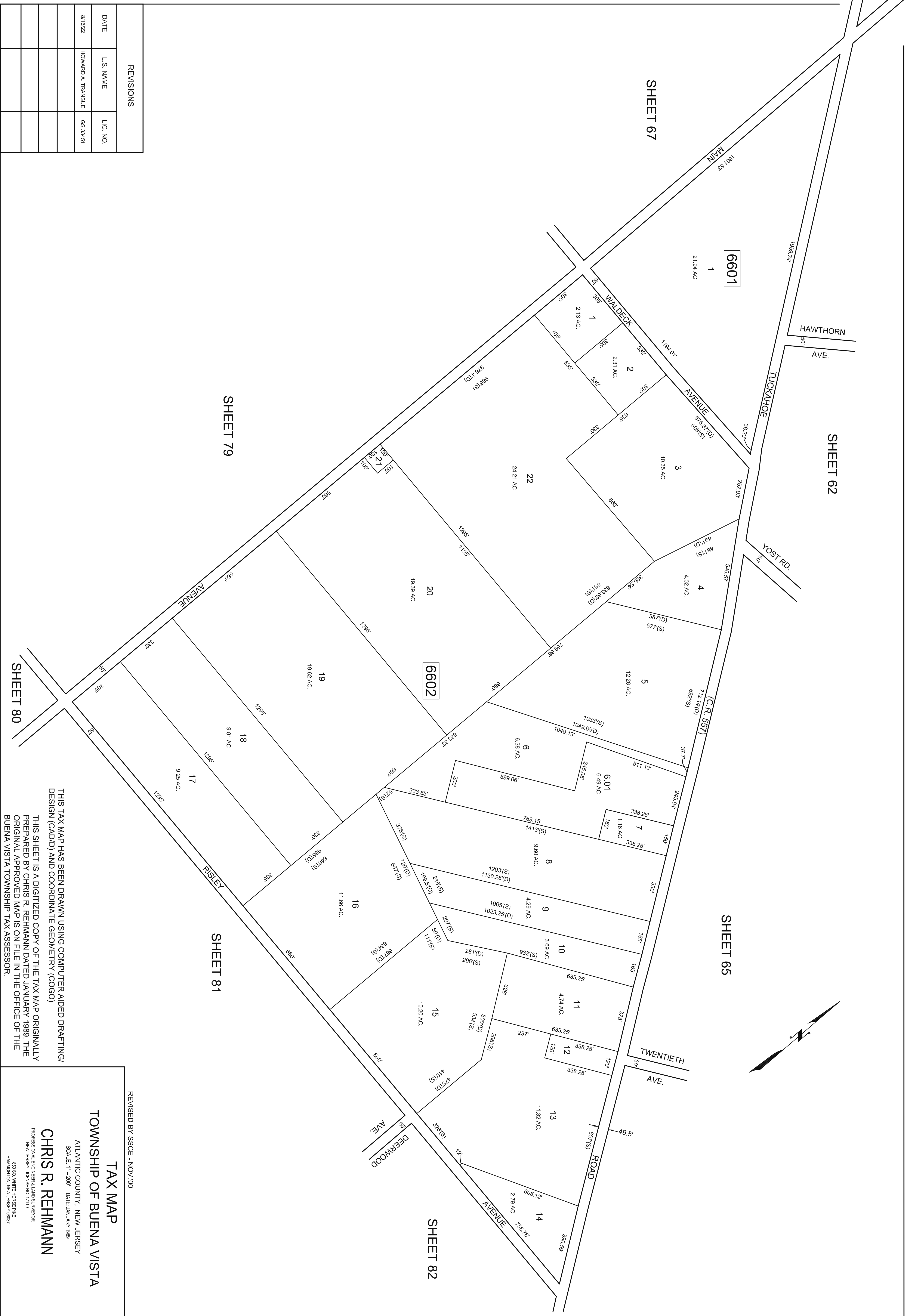
THIS SHEET IS A DIGITIZED COPY OF THE TAX MAP ORIGINALLY PREPARED BY CHRIS R. REHMANN DATED JANUARY 1989. THE ORIGINAL APPROVED MAP IS ON FILE IN THE OFFICE OF THE BUENA VISTA TOWNSHIP TAX ASSESSOR.

REVISIONS	
DATE	L.S. NAME
1/15/09	HOWARD A. TRANSUE
	LIC. NO.
	GS 33451

TAX MAP
TOWNSHIP OF BUENA VISTA
 ATLANTIC COUNTY, NEW JERSEY
 SCALE: 1" = 200' DATE: JANUARY 1989

CHRIS R. REHMANN
 PROFESSIONAL ENGINEER & LAND SURVEYOR
 NEW JERSEY LICENSE NO. 17119
 850 SO. WHITE HORSE PINE
 HAMMONTON, NEW JERSEY 08037

REVISED BY CHURCHILL - OCT '98



REVISIONS

DATE	L.S. NAME	LIC. NO.
8/16/22	HOWARD A. TRANSLUE	GS 33451

REVISED BY SSCCE - NOV.00

THIS TAX MAP HAS BEEN DRAWN USING COMPUTER AIDED DRAFTING/ DESIGN (CAD/D) AND COORDINATE GEOMETRY (COGO)

THIS SHEET IS A DIGITIZED COPY OF THE TAX MAP ORIGINALLY PREPARED BY CHRIS R. REHMANN DATED JANUARY 1989. THE ORIGINAL APPROVED MAP IS ON FILE IN THE OFFICE OF THE BUENA VISTA TOWNSHIP TAX ASSESSOR.

REVISED BY SSCCE - NOV.00

TAX MAP

TOWNSHIP OF BUENA VISTA

ATLANTIC COUNTY, NEW JERSEY

SCALE: 1" = 200' DATE: JANUARY 1989

CHRIS R. REHMANN

PROFESSIONAL ENGINEER & LAND SURVEYOR

NEW JERSEY LICENSE NO. 17119

805 SO. WHITE HORSE PINE

HAMMONTON, NEW JERSEY 08037

SHEET 80

SHEET 79

SHEET 81

SHEET 82

SHEET 67

SHEET 62

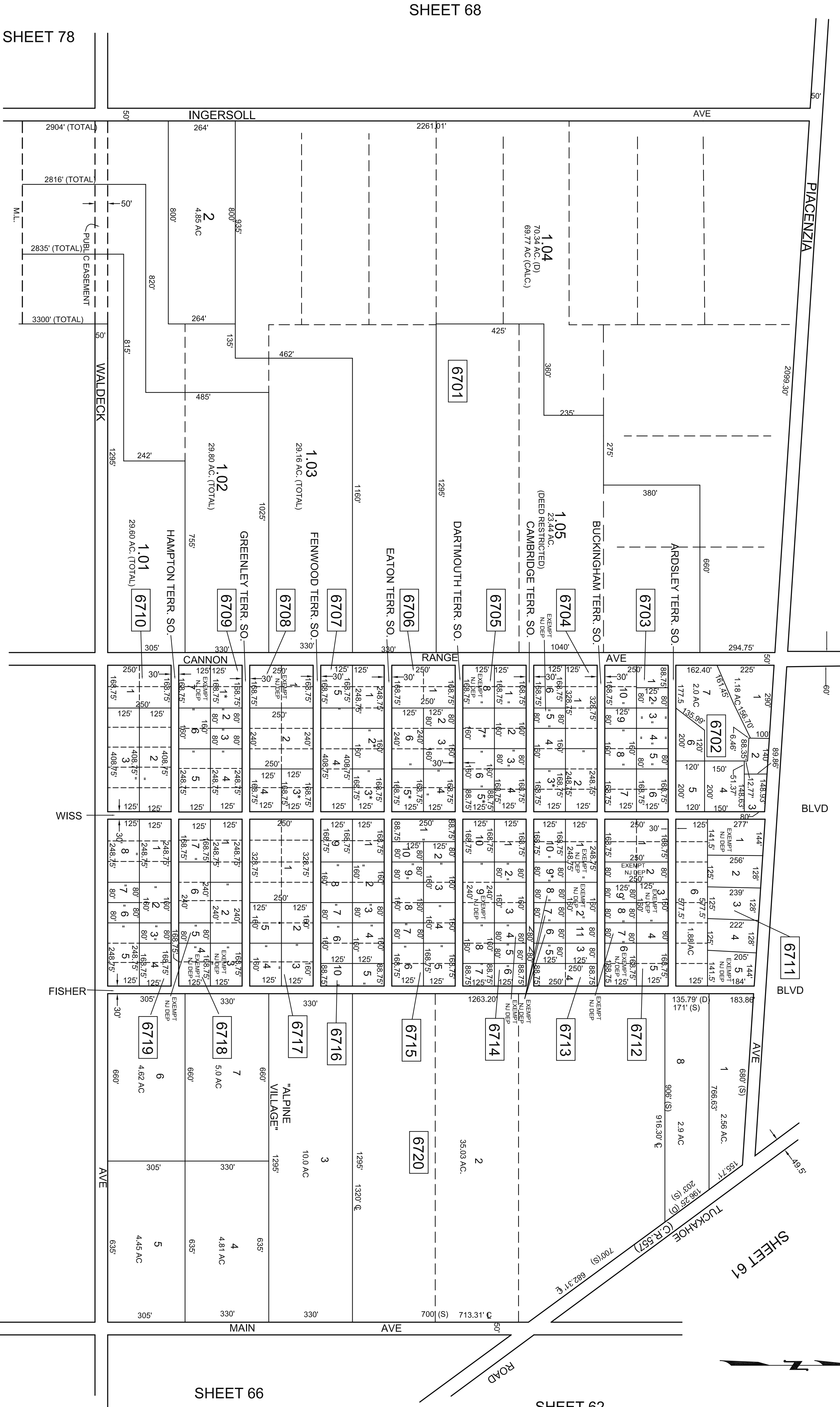
SHEET 65

6601

6602

601

SHEET 60



SHEET 68

SHEET 78

REVISIONS

DATE	L.S. NAME	LIC. NO.

" ALL LOTS WHICH DO NOT HAVE DEED DIMENSIONS SHOWN WERE SCALED DURING TAX MAP PREPARATION IN 1989"

SHEET 79

* = EXEMPT-BUENA VISTA TOWNSHIP

THIS TAX MAP HAS BEEN DRAWN USING COMPUTER AIDED DRAFTING/ DESIGN (CAD/D) AND COORDINATE GEOMETRY (COGO)

THIS SHEET IS A DIGITIZED COPY OF THE TAX MAP ORIGINALLY PREPARED BY CHRIS R. REHMANN DATED JANUARY 1989. THE ORIGINAL APPROVED MAP IS ON FILE IN THE OFFICE OF THE BUENA VISTA TOWNSHIP TAX ASSESSOR.

TAX MAP
TOWNSHIP OF BUENA VISTA

ATLANTIC COUNTY, NEW JERSEY
SCALE: 1" = 200' DATE: JANUARY 1989

CHRIS R. REHMANN

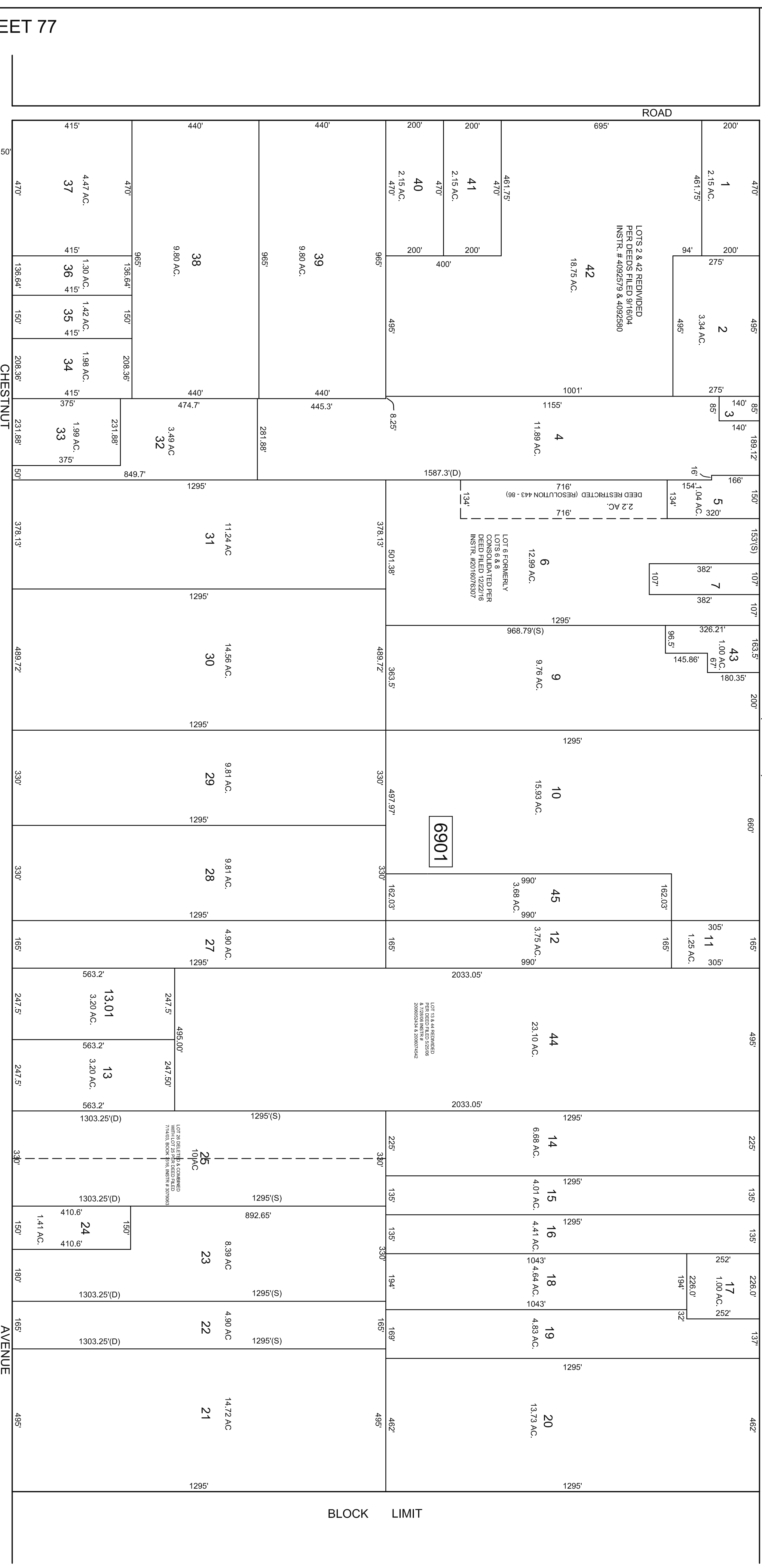
PROFESSIONAL ENGINEER & LAND SURVEYOR
NEW JERSEY LICENSE NO. 17119
865 SO. WHITE HORSE PINE
HAMMONTON, NEW JERSEY 08037

REVISED BY ALEXANDER M. CHURCHILL ASSOC. - FEB. 95, JAN. 97, FEB. 98
REV. SSCOE TT-100

SHEET 70

SHEET 59

(C.R. 540)



SHEET 77

SHEET 60



REVISIONS		
DATE	L.S. NAME	L.I.C. NO.
2/20/06	HOWARD A. TRANSUE	GS 33451
1/15/09	HOWARD A. TRANSUE	GS 33451
2/13/18	HOWARD A. TRANSUE	GS 33451

TAX MAP
TOWNSHIP OF BUENA VISTA

ATLANTIC COUNTY, NEW JERSEY
 SCALE: 1" = 200' DATE: JANUARY 1989
CHRIS R. REHMANN

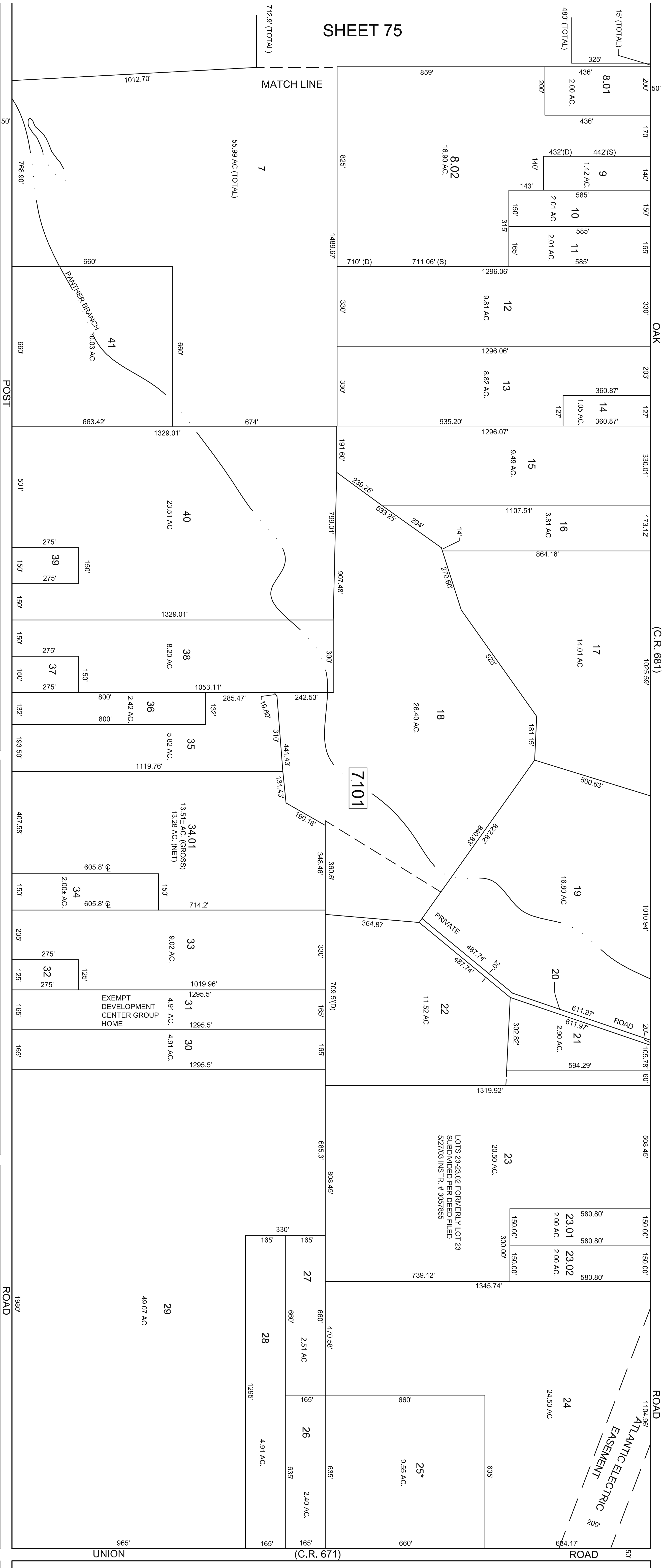
PROFESSIONAL ENGINEER & LAND SURVEYOR
 660 SO. WHITE HORSE PINE
 NEW BRUNSWICK, NEW JERSEY 08907
 HAMMONTON, NEW JERSEY 08027

REV. SSCE 11 - 00, AUG. 2004
 REVISED BY ALEXANDER M. CHURCHILL ASSOC. - FEB. '96, OCT. '98

SHEET 68

THIS TAX MAP HAS BEEN DRAWN USING COMPUTER AIDED DRAFTING/
 DESIGN (CAD/D) AND COORDINATE GEOMETRY (COGO)

THIS SHEET IS A DIGITIZED COPY OF THE TAX MAP ORIGINALLY
 PREPARED BY CHRIS R. REHMANN DATED JANUARY 1989. THE
 ORIGINAL APPROVED MAP IS ON FILE IN THE OFFICE OF THE
 BUENA VISTA TOWNSHIP TAX ASSESSOR.



REVISIONS		
DATE	L.S. NAME	LIC. NO.
1/15/09	HOWARD A. TRANSUE	GS 33451
2/13/18	HOWARD A. TRANSUE	GS 33451
8/16/22	HOWARD A. TRANSUE	GS 33451

SHEET 76

SHEET 70

SHEET 72

* = EXEMPT-BUENA VISTA TOWNSHIP

THIS TAX MAP HAS BEEN DRAWN USING COMPUTER AIDED DRAFTING/ DESIGN (CAD/D) AND COORDINATE GEOMETRY (COGO)

THIS SHEET IS A DIGITIZED COPY OF THE TAX MAP ORIGINALLY PREPARED BY CHRIS R. REHMANN DATED JANUARY 1989. THE ORIGINAL APPROVED MAP IS ON FILE IN THE OFFICE OF THE BUENA VISTA TOWNSHIP TAX ASSESSOR.

TAX MAP
TOWNSHIP OF BUENA VISTA

ATLANTIC COUNTY, NEW JERSEY
SCALE: 1" = 200' DATE: JANUARY 1989

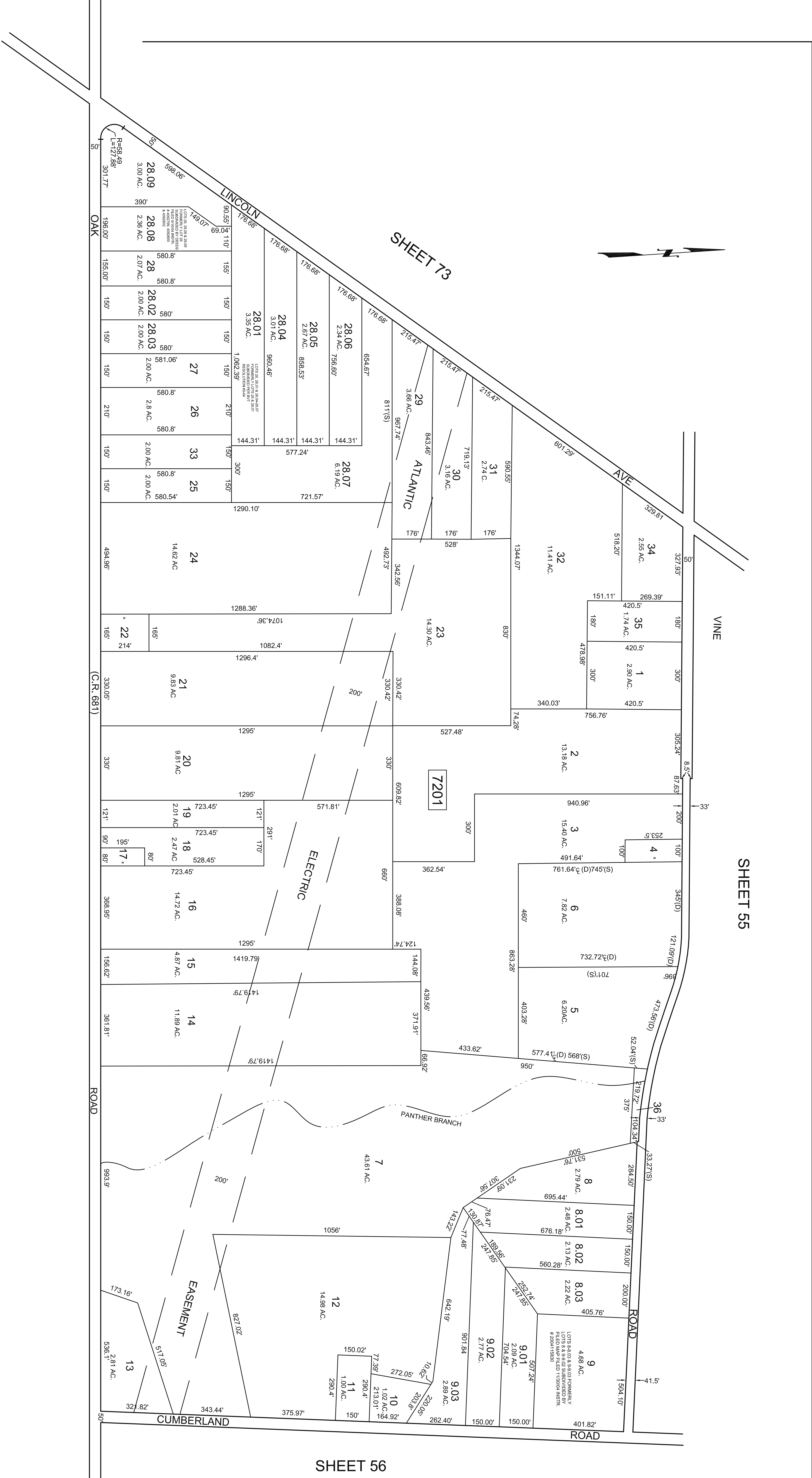
CHRIS R. REHMANN
PROFESSIONAL ENGINEER & LAND SURVEYOR
NEW JERSEY LICENSE NO. 17119
850 SO. WHITE HORSE PINE
HAMMONTON, NEW JERSEY 08037

SHEET 72

SHEET 56

SHEET 57

SHEET 58



REVISIONS		
DATE	L.S. NAME	L.I.C. NO.
3/20/09	HOWARD A. TRANSUE	GS 33461
8/16/22	HOWARD A. TRANSUE	GS 33461

SHEET 75

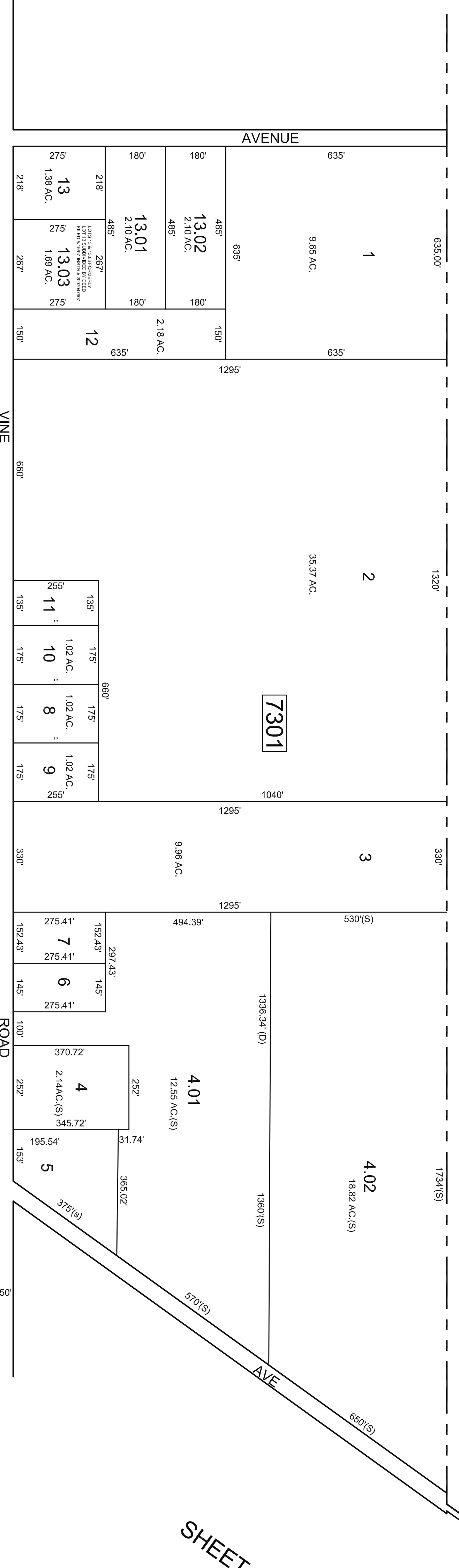
SHEET 71

REVISED BY SSCCE - AUG. 2004
 REVISED BY CHURCHILL - FEB. '98 FEB. '1999

THIS TAX MAP HAS BEEN DRAWN USING COMPUTER AIDED DRAFTING/
 DESIGN (CAD/D) AND COORDINATE GEOMETRY (COGO)
 THIS SHEET IS A DIGITIZED COPY OF THE TAX MAP ORIGINALLY
 PREPARED BY CHRIS R. REHMANN DATED JANUARY 1989. THE
 ORIGINAL APPROVED MAP IS ON FILE IN THE OFFICE OF THE
 BUENA VISTA TOWNSHIP TAX ASSESSOR.

TAX MAP
TOWNSHIP OF BUENA VISTA
 ATLANTIC COUNTY, NEW JERSEY
 SCALE: 1" = 200' DATE: JANUARY 1989
CHRIS R. REHMANN
 PROFESSIONAL ENGINEER & LAND SURVEYOR
 NEW JERSEY LICENSE NO. 17179
 830 SO. WHITE HORSE PINE
 HAMMONTON, NEW JERSEY 08027

ATLANTIC BUENA BORO COUNTY



SHEET 74

SHEET 72

SHEET 55



REV 1-6-95

REVISED BY SCOE - AUG. 2004
REVISED BY CHURCHILL - JAN - '97, FEB. '98, OCT. '98

SHEET 75

REVISIONS		
DATE	L.S. NAME	LIC. NO.
1/15/09	HOWARD A. TRANSUE	GS 33451

TAX MAP	
TOWNSHIP OF BUENA VISTA	
ATLANTIC COUNTY, NEW JERSEY	
SCALE: 1" = 200' DATE: JANUARY 1989	
CHRIS R. REHMANN	
<small>PROFESSIONAL ENGINEER & LAND SURVEYOR 650 SO. WHITE HORSE PINE NEW JERSEY LICENSE NO. 17119 HAMMONTON, NEW JERSEY 08037</small>	

THIS TAX MAP HAS BEEN DRAWN USING COMPUTER AIDED DRAFTING/ DESIGN (CAD/D) AND COORDINATE GEOMETRY (COGO)

THIS SHEET IS A DIGITIZED COPY OF THE TAX MAP ORIGINALLY PREPARED BY CHRIS R. REHMANN DATED JANUARY 1989. THE ORIGINAL APPROVED MAP IS ON FILE IN THE OFFICE OF THE BUENA VISTA TOWNSHIP TAX ASSESSOR.

SHEET 74

SHEET 73

SHEET 72

SHEET 71

SHEET 76

CITY OF VINELAND
CUMBERLAND COUNTY



NOTE:

RE: LOTS 11 & 12, BLOCK 7501
THE OVERLAPPING LINES & DIMENSIONS SHOWN ARE PLOTTED IN ACCORDANCE WITH THE METES & BOUNDS DESCRIPTIONS APPEARING IN THE LAST DEED OF RECORD FOR EACH PARCEL & DO NOT PURPORT TO REPRESENT TITLE OR OWNERSHIP STATUS IN ANY MANNER. THESE SITUATIONS ARE SUBJECT TO SOLUTIONS BY THE PROPERTY OWNERS CONCERNED.

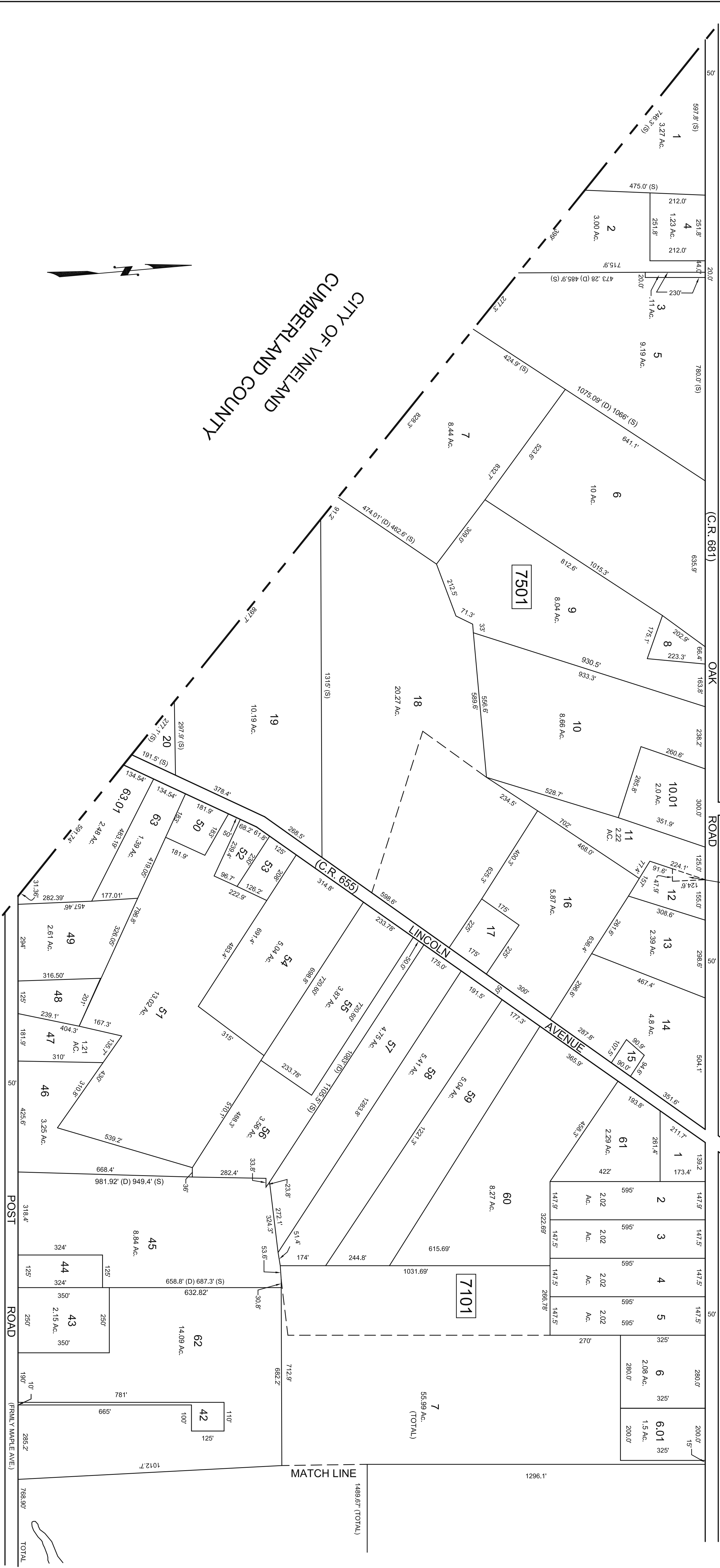
ALL LOTS WHICH DO NOT HAVE DEED DIMENSIONS SHOWN WERE SCALED DURING TAX MAP PREPARATION IN 1989

THIS TAX MAP HAS BEEN DRAWN USING COMPUTER AIDED DRAFTING/ DESIGN (CAD/D) AND COORDINATE GEOMETRY (COGO)

THIS SHEET IS A DIGITIZED COPY OF THE TAX MAP ORIGINALLY PREPARED BY CHRIS R. REHMANN DATED JANUARY 1989. THE ORIGINAL APPROVED MAP IS ON FILE IN THE OFFICE OF THE BUENA VISTA TOWNSHIP TAX ASSESSOR.

REVISED BY SSCC - AUG. 2004
REVISED BY ALEXANDER M. CHURCHILL ASSOC. - FEB. 96, OCT. 98

REVISIONS	
DATE	L.S. NAME LIC. NO.



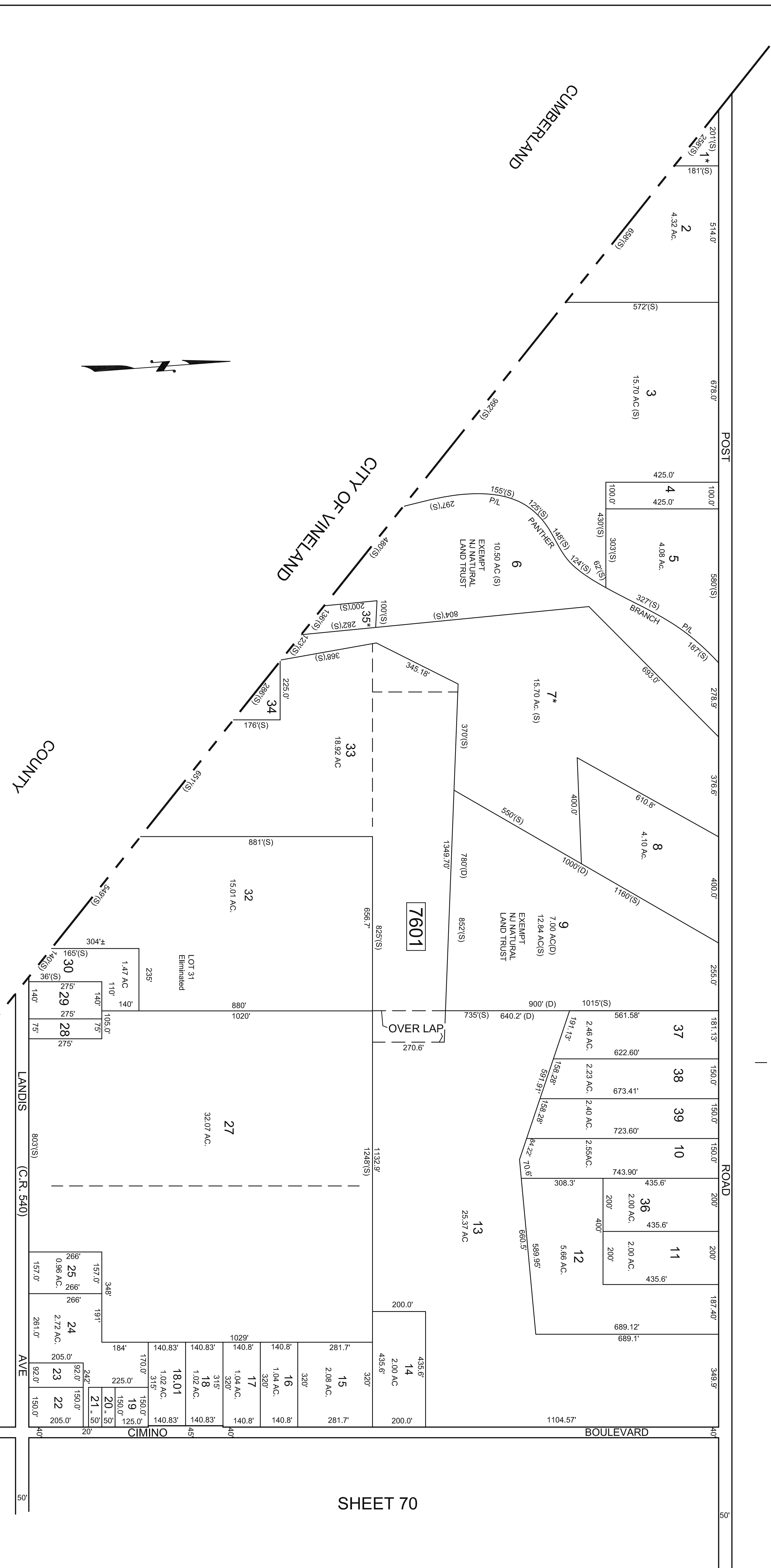
TAX MAP
TOWNSHIP OF BUENA VISTA
ATLANTIC COUNTY, NEW JERSEY
SCALE: 1" = 200' DATE: JANUARY 1989

CHRIS R. REHMANN

PROFESSIONAL ENGINEER & LAND SURVEYOR
NEW JERSEY LICENSE NO. 17119
650 SO. WHITE HORSE PINE
HAMMONTON, NEW JERSEY 08027

SHEET 75

SHEET 71



SHEET 77

SHEET 70

* = EXEMPT-BUENA VISTA TOWNSHIP

THIS TAX MAP HAS BEEN DRAWN USING COMPUTER AIDED DRAFTING/ DESIGN (CAD/D) AND COORDINATE GEOMETRY (COGO)

THIS SHEET IS A DIGITIZED COPY OF THE TAX MAP ORIGINALLY PREPARED BY CHRIS R. REHMANN DATED JANUARY 1989. THE ORIGINAL APPROVED MAP IS ON FILE IN THE OFFICE OF THE BUENA VISTA TOWNSHIP TAX ASSESSOR.

TAX MAP

TOWNSHIP OF BUENA VISTA

ATLANTIC COUNTY, NEW JERSEY

CHRIS R. REHMANN

PROFESSIONAL ENGINEER & LAND SURVEYOR
NEW JERSEY LICENSE NO. 17119
865 SO. WHITE HORSE PINE
HAMMONTON, NEW JERSEY 08037

NOTE:

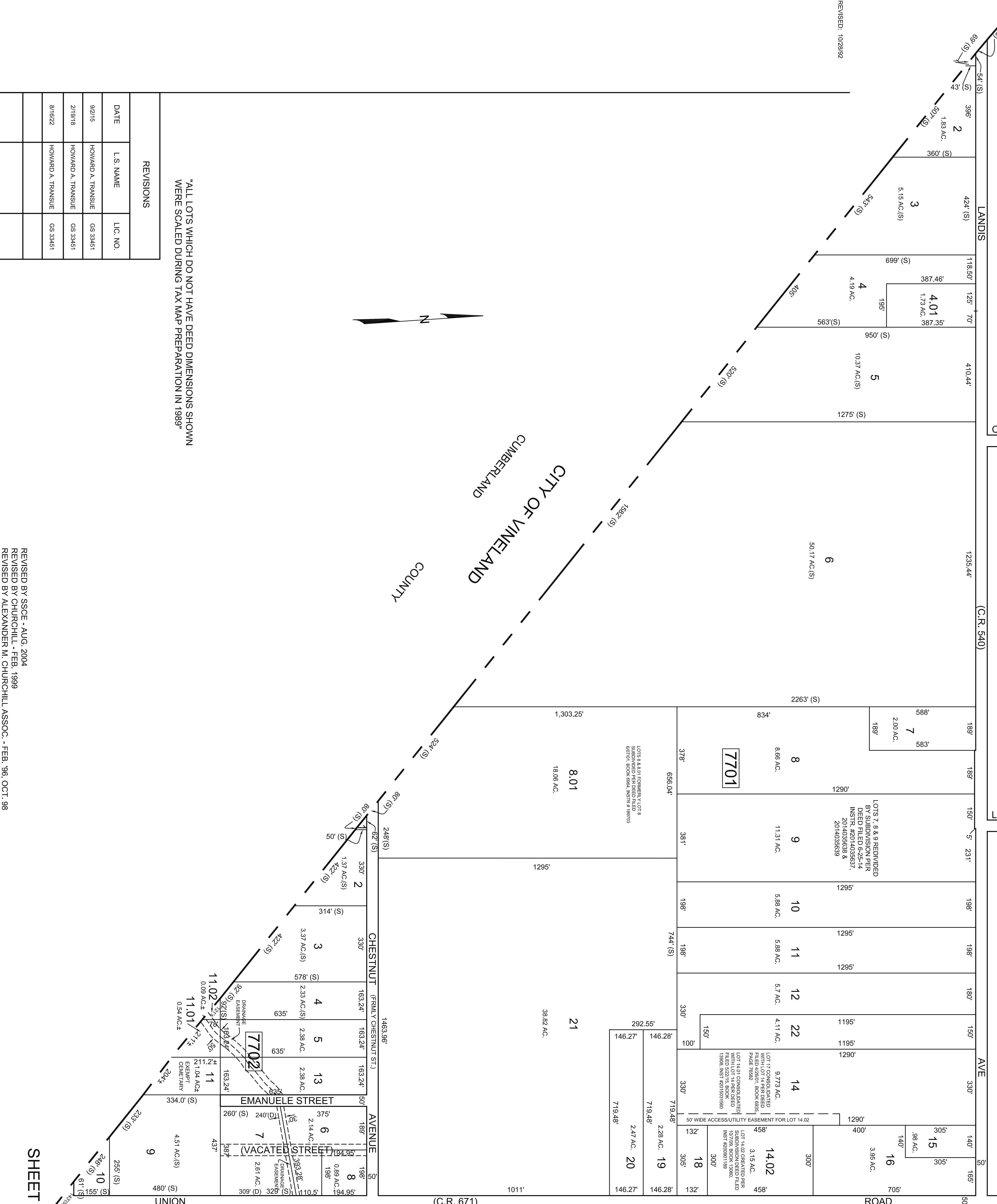
RE: LOTS 13 & 33
THE OVERLAPPING LINES & DIMENSIONS SHOWN ARE PLOTTED IN ACCORDANCE WITH THE METES & BOUNDS DESCRIPTIONS APPEARING IN THE LAST DEED OF RECORD FOR EACH PARCEL & DO NOT PURPORT TO REPRESENT TITLE OR OWNERSHIP STATUS IN ANY MANNER. THESE SITUATIONS ARE SUBJECT TO SOLUTIONS BY THE PROPERTY OWNERS CONCERNED.

REVISIONS

DATE	L.S. NAME	LIC. NO.

REVISED BY CHURCHILL - JAN. 97, FEB. 1999

REVISED BY ALEXANDER M. CHURCHILL ASSOC. - JUNE 95



"ALL LOTS WHICH DO NOT HAVE DEED DIMENSIONS SHOWN WERE SCALED DURING TAX MAP PREPARATION IN 1989"

REVISIONS

DATE	L.S. NAME	L.I.C. NO.
9/2/15	HOWARD A. TRANSUE	GS 33461
2/19/18	HOWARD A. TRANSUE	GS 33461
8/16/22	HOWARD A. TRANSUE	GS 33461

THIS TAX MAP HAS BEEN DRAWN USING COMPUTER AIDED DRAFTING/ DESIGN (CAD/D) AND COORDINATE GEOMETRY (COGO)

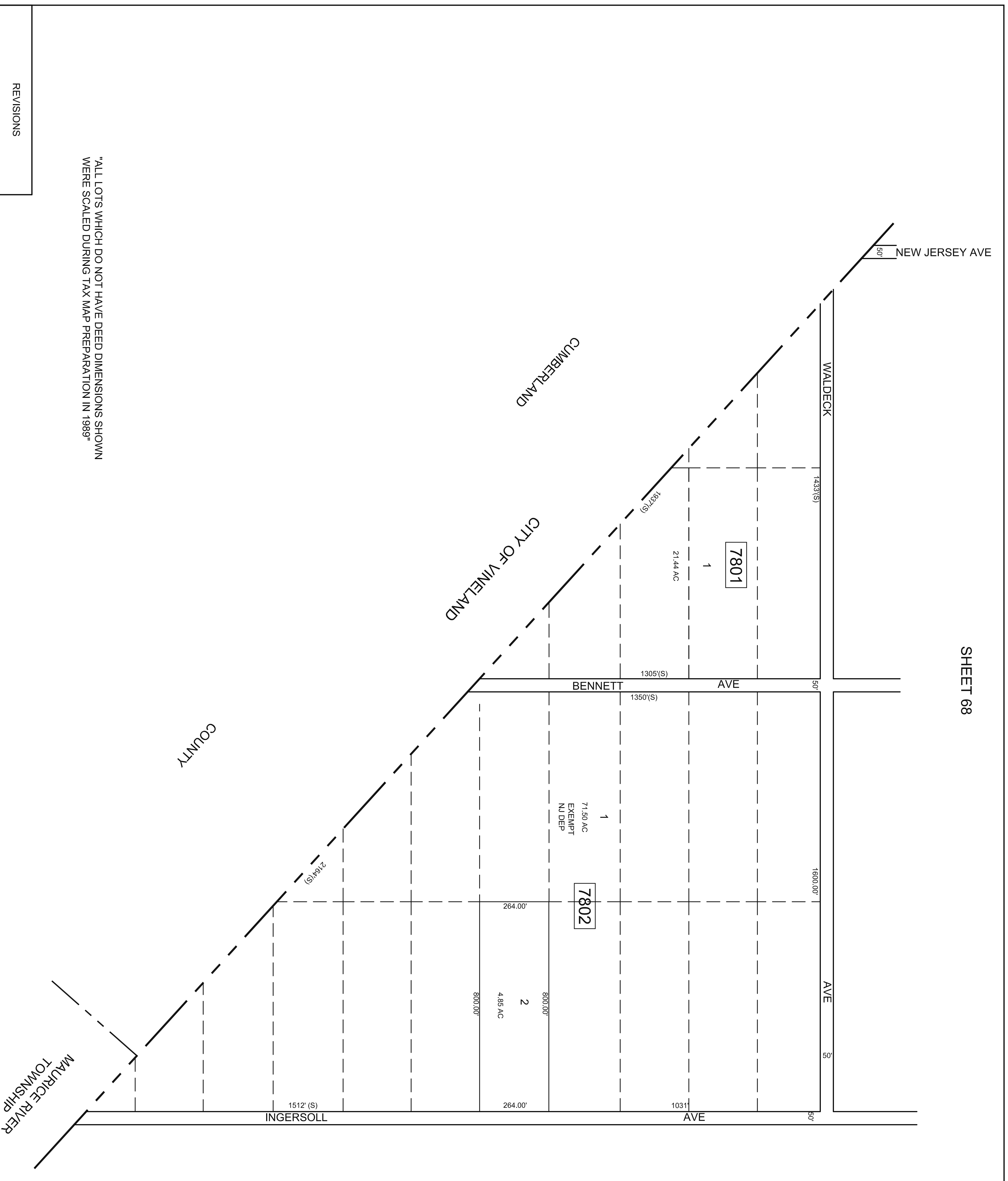
THIS SHEET IS A DIGITIZED COPY OF THE TAX MAP ORIGINALLY PREPARED BY CHRIS R. REHMANN DATED JANUARY 1989. THE ORIGINAL APPROVED MAP IS ON FILE IN THE OFFICE OF THE BUENA VISTA TOWNSHIP TAX ASSESSOR.

REVISED BY SSCCE - AUG. 2004
 REVISED BY CHURCHILL - FEB. 1999
 REVISED BY ALEXANDER M. CHURCHILL ASSOC. - FEB. 96, OCT. 98

TAX MAP
TOWNSHIP OF BUENA VISTA
 ATLANTIC COUNTY, NEW JERSEY
 SCALE: 1" = 200' DATE: JANUARY 1989
CHRIS R. REHMANN
 PROFESSIONAL ENGINEER & LAND SURVEYOR
 NEW JERSEY LICENSE NO. 17119
 850 SO. WHITE HORSE PINE
 HAMMONTON, NEW JERSEY 08027

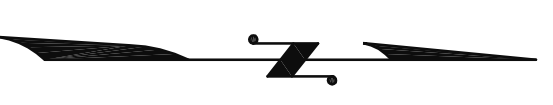
SHEET 68

SHEET 67



"ALL LOTS WHICH DO NOT HAVE DEED DIMENSIONS SHOWN WERE SCALED DURING TAX MAP PREPARATION IN 1989"

SHEET 79



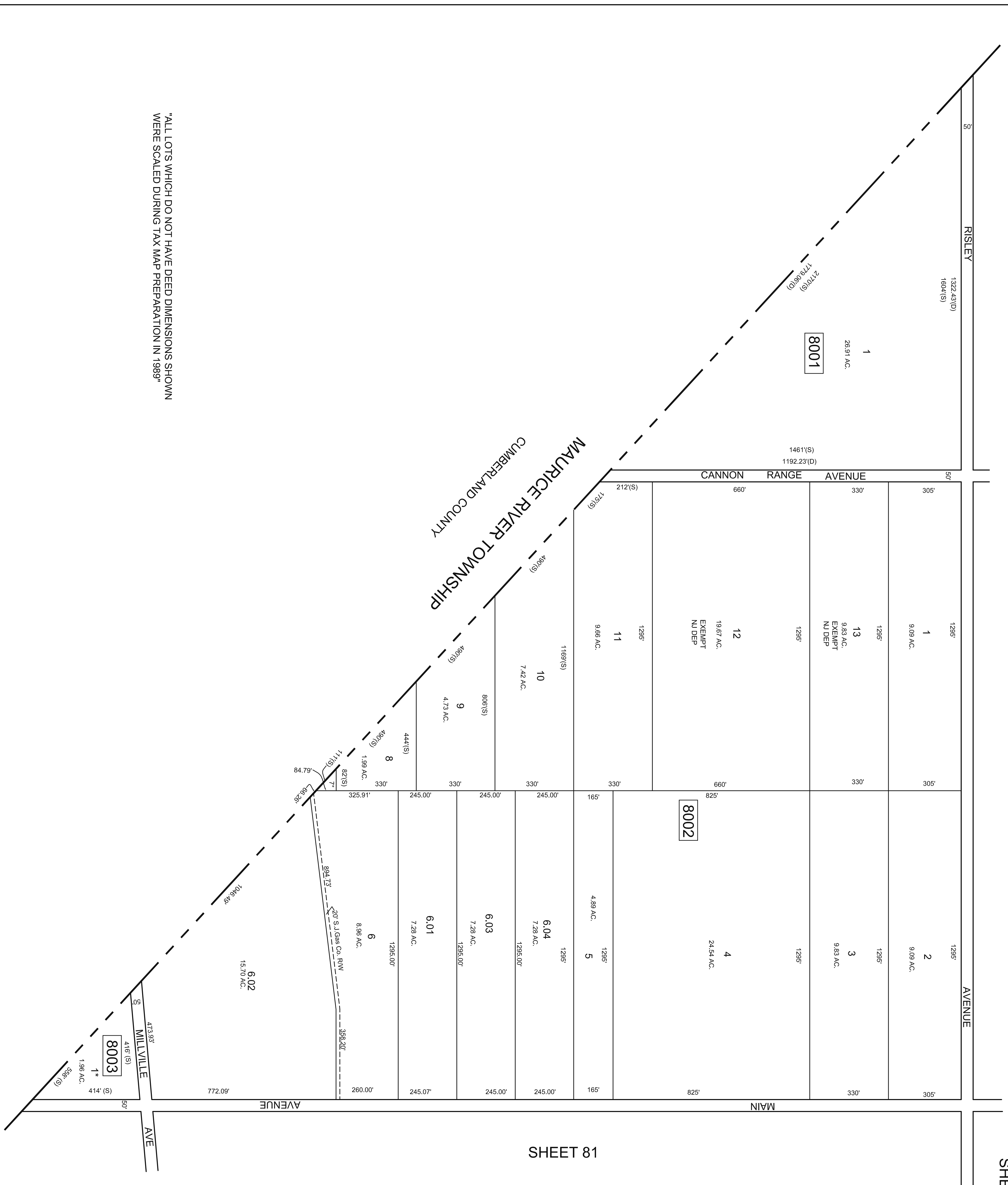
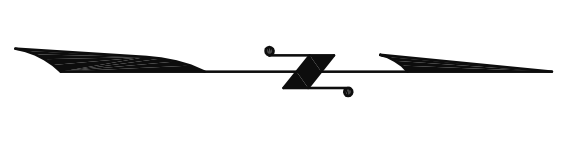
THIS TAX MAP HAS BEEN DRAWN USING COMPUTER AIDED DRAFTING/ DESIGN (CAD/D) AND COORDINATE GEOMETRY (COGO)

THIS SHEET IS A DIGITIZED COPY OF THE TAX MAP ORIGINALLY PREPARED BY CHRIS R. REHMANN DATED JANUARY 1989. THE ORIGINAL APPROVED MAP IS ON FILE IN THE OFFICE OF THE BUENA VISTA TOWNSHIP TAX ASSESSOR.

REVISIONS		
DATE	L.S. NAME	LIC. NO.

TAX MAP
TOWNSHIP OF BUENA VISTA
 ATLANTIC COUNTY, NEW JERSEY
 SCALE: 1" = 200' DATE: JANUARY 1989
CHRIS R. REHMANN
 PROFESSIONAL ENGINEER & LAND SURVEYOR
 NEW JERSEY LICENSE NO. 17119
 805 SO. WHITE HORSE PIKE
 HAMMONTON, NEW JERSEY 08037

REVISIONS		
DATE	L.S. NAME	LIC. NO.



"ALL LOTS WHICH DO NOT HAVE DEED DIMENSIONS SHOWN WERE SCALED DURING TAX MAP PREPARATION IN 1989"

* = EXEMPT-BUENA VISTA TOWNSHIP
 THIS TAX MAP HAS BEEN DRAWN USING COMPUTER AIDED DRAFTING/ DESIGN (CAD/D) AND COORDINATE GEOMETRY (COGO)
 THIS SHEET IS A DIGITIZED COPY OF THE TAX MAP ORIGINALLY PREPARED BY CHRIS R. REHMANN DATED JANUARY 1989. THE ORIGINAL APPROVED MAP IS ON FILE IN THE OFFICE OF THE BUENA VISTA TOWNSHIP TAX ASSESSOR.

TAX MAP
TOWNSHIP OF BUENA VISTA
 ATLANTIC COUNTY, NEW JERSEY
 SCALE: 1" = 200' DATE: JANUARY 1989
CHRIS R. REHMANN
 PROFESSIONAL ENGINEER & LAND SURVEYOR
 NEW JERSEY LICENSE NO. 17119
 805 SO. WHITE HORSE PIKE
 HAMMONTON, NEW JERSEY 08037

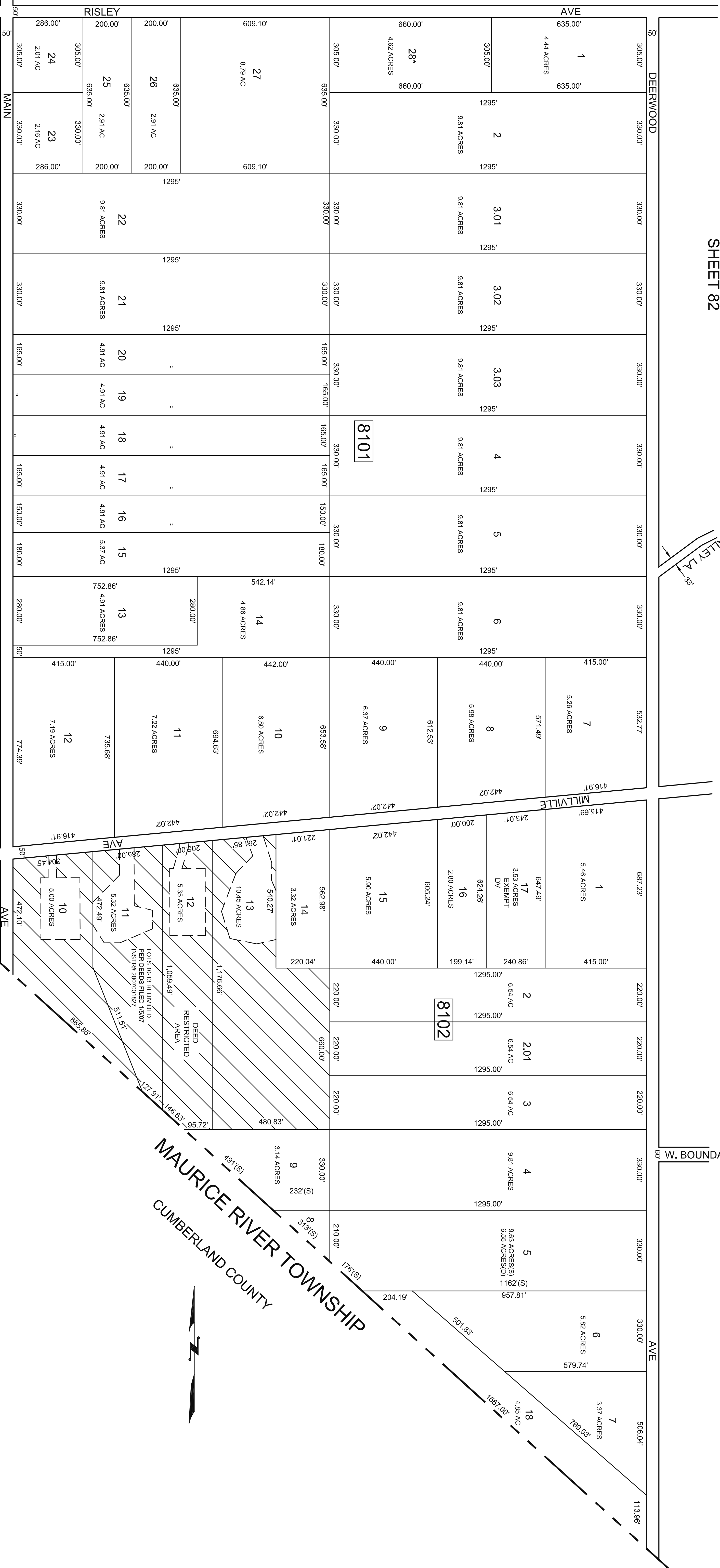
SHEET 83

SHEET 82

SHEET 66

SHEET 79

SHEET 80



ALL LOTS WHICH DO NOT HAVE DEED DIMENSIONS SHOWN WERE SCALED DURING TAX MAP PREPARATION IN 1989

* = EXEMPT- BUENA VISTA TOWNSHIP
DV= DISABLED VETERAN

THIS TAX MAP HAS BEEN DRAWN USING COMPUTER AIDED DRAFTING/ DESIGN (CAD) AND COORDINATE GEOMETRY (COGO)
THIS SHEET IS A DIGITIZED COPY OF THE TAX MAP ORIGINALLY PREPARED BY CHRIS R. REHMANN DATED JANUARY 1989. THE ORIGINAL APPROVED MAP IS ON FILE IN THE OFFICE OF THE BUENA VISTA TOWNSHIP TAX ASSESSOR.

REVISED BY CHURCHILL - FEB. 1999

REVISIONS		
DATE	L.S. NAME	LIC. NO.
11/5/09	HOWARD A. TRANSLUE	GS 33451

TAX MAP
TOWNSHIP OF BUENA VISTA

ATLANTIC COUNTY, NEW JERSEY
SCALE: 1" = 200' DATE: JANUARY 1989

CHRIS R. REHMANN
PROFESSIONAL ENGINEER & LAND SURVEYOR
NEW JERSEY LICENSE NO. 17719
800 SO. WHITE HORSE PINE
HAMMONTON, NEW JERSEY 08037





SHEET 81

SHEET 66

SHEET 65

SHEET 64

SHEET 83

SHEET 84

REVISIONS		
DATE	L.S. NAME	L.I.C. NO.
2/20/06	HOWARD A. TRANSUE	GS 33451
1/15/09	HOWARD A. TRANSUE	GS 33451

TAX MAP
TOWNSHIP OF BUENA VISTA

ATLANTIC COUNTY, NEW JERSEY
 SCALE: 1" = 200' DATE: JANUARY 1989
CHRIS R. REHMANN

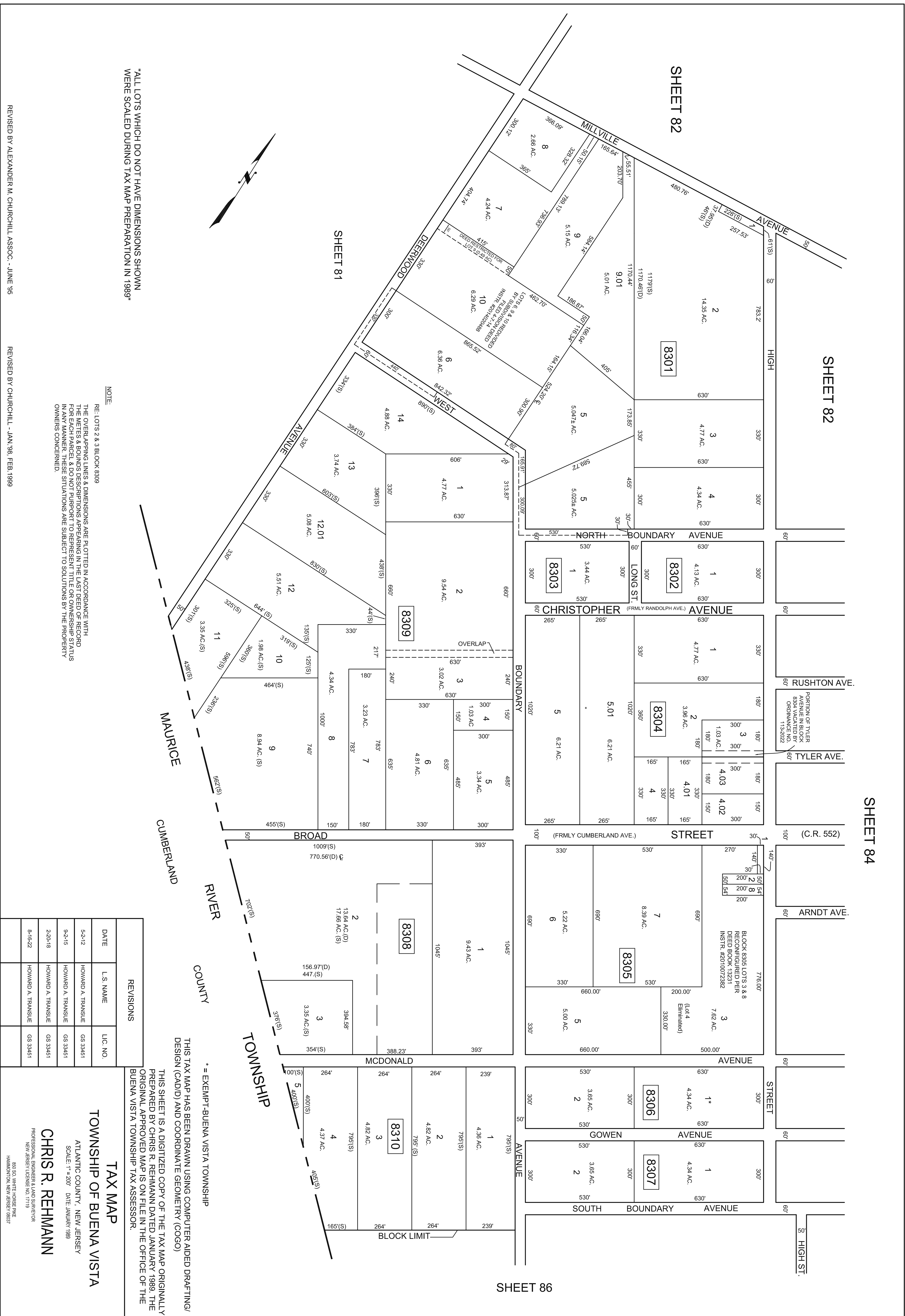
PROFESSIONAL ENGINEER & LAND SURVEYOR
 NEW JERSEY LICENSE NO. 11119
 601 SO. WHITE HORSE PINE
 HAMMONTON, NEW JERSEY 08037

NOTE:
 RE: LOTS 2 & 5, BLOCK 8203
 THE OVERLAPPING LINES & DIMENSIONS SHOWN ARE PLOTTED IN ACCORDANCE WITH THE METERS & BOUNDS DESCRIPTIONS APPEARING IN THE LAST DEED OF RECORD FOR EACH PARCEL, & DO NOT PURPORT TO REPRESENT TITLE OR OWNERSHIP STATUS IN ANY MANNER. THESE SITUATIONS ARE SUBJECT TO SOLUTIONS BY THE PROPERTY OWNERS CONCERNED.

* = EXEMPT-BUENA VISTA TOWNSHIP

THIS TAX MAP HAS BEEN DRAWN USING COMPUTER AIDED DRAFTING/ DESIGN (CAD/D) AND COORDINATE GEOMETRY (COGO)
 THIS SHEET IS A DIGITIZED COPY OF THE TAX MAP ORIGINALLY PREPARED BY CHRIS R. REHMANN DATED JANUARY 1989. THE ORIGINAL APPROVED MAP IS ON FILE IN THE OFFICE OF THE BUENA VISTA TOWNSHIP TAX ASSESSOR.

REVISED BY SSCE - AUG. 2004
 REVISED BY CHURCHILL - OCT. 98



"ALL LOTS WHICH DO NOT HAVE DIMENSIONS SHOWN WERE SCALED DURING TAX MAP PREPARATION IN 1989"

NOTE:

RE: LOTS 2 & 3 BLOCK 8309
THE OVERLAPPING LINES & DIMENSIONS ARE PLOTTED IN ACCORDANCE WITH THE METES & BOUNDS DESCRIPTIONS APPEARING IN THE LAST DEED OF RECORD FOR EACH PARCEL, & DO NOT PURPORT TO REPRESENT TITLE OR OWNERSHIP STATUS IN ANY MANNER. THESE SITUATIONS ARE SUBJECT TO SOLUTIONS BY THE PROPERTY OWNERS CONCERNED.

REVISED BY ALEXANDER M. CHURCHILL, ASSOC. - JUNE 95

REVISED BY CHURCHILL - JAN. 98, FEB. 1999

REVISIONS		
DATE	L.S. NAME	L.I.C. NO.
5-2-12	HOWARD A. TRANSUE	GS 33451
9-2-15	HOWARD A. TRANSUE	GS 33451
2-20-18	HOWARD A. TRANSUE	GS 33451
8-16-22	HOWARD A. TRANSUE	GS 33451

TAX MAP
TOWNSHIP OF BUENA VISTA

ATLANTIC COUNTY, NEW JERSEY
SCALE: 1" = 200' DATE: JANUARY 1989
CHRIS R. REHMANN
PROFESSIONAL ENGINEER & LAND SURVEYOR
NEW JERSEY LICENSE NO. 17119
865 SO. WHITE HORSE PINE
HAMMONTON, NEW JERSEY 08037

THIS TAX MAP HAS BEEN DRAWN USING COMPUTER AIDED DRAFTING/ DESIGN (CAD/D) AND COORDINATE GEOMETRY (COGO)

THIS SHEET IS A DIGITIZED COPY OF THE TAX MAP ORIGINALLY PREPARED BY CHRIS R. REHMANN DATED JANUARY 1989. THE ORIGINAL APPROVED MAP IS ON FILE IN THE OFFICE OF THE BUENA VISTA TOWNSHIP TAX ASSESSOR.

* = EXEMPT-BUENA VISTA TOWNSHIP

SHEET 84

SHEET 86



CONRAIL (FORMERLY PENN READING SEASHORE LINE) - CAPE MAY BRANCH

THIS SHEET IS A DIGITIZED COPY OF THE TAX MAP ORIGINALLY PREPARED BY CHRIS R. REHMANN DATED JANUARY 1989. THE ORIGINAL APPROVED MAP IS ON FILE IN THE OFFICE OF THE BUENA VISTA TOWNSHIP TAX ASSESSOR.

THIS TAX MAP HAS BEEN DRAWN USING COMPUTER AIDED DRAFTING/ DESIGN (CADD) AND COORDINATE GEOMETRY (COGO)

* = EXEMPT-BUENA VISTA TOWNSHIP

* ALL LOTS WHICH DO NOT HAVE DEED DIMENSIONS SHOWN WHERE SCALED DURING TAX MAP PREPARATION IN 1989 *

REVISIONS		
DATE	U.S. NAME	LIC. NO.
1/15/09	HOWARD A. TRANSUE	GS 33451
8/16/22	HOWARD A. TRANSUE	GS 33451

TAX MAP
 TOWNSHIP OF BUENA VISTA
 ATLANTIC COUNTY, NEW JERSEY
 SCALE: 1" = 200' DATE: JANUARY 1989

CHRIS R. REHMANN

PROFESSIONAL ENGINEER & LAND SURVEYOR
 650 SO. WHITE HORSE PKE
 NEW JERSEY LICENSE NO. 17119
 HAMILTON, NEW JERSEY 08527

REVISED BY SSCS - AUG 2004
 REVISED BY CHURCHILL - JAN. 97, OCT. '98, FEB. 1999

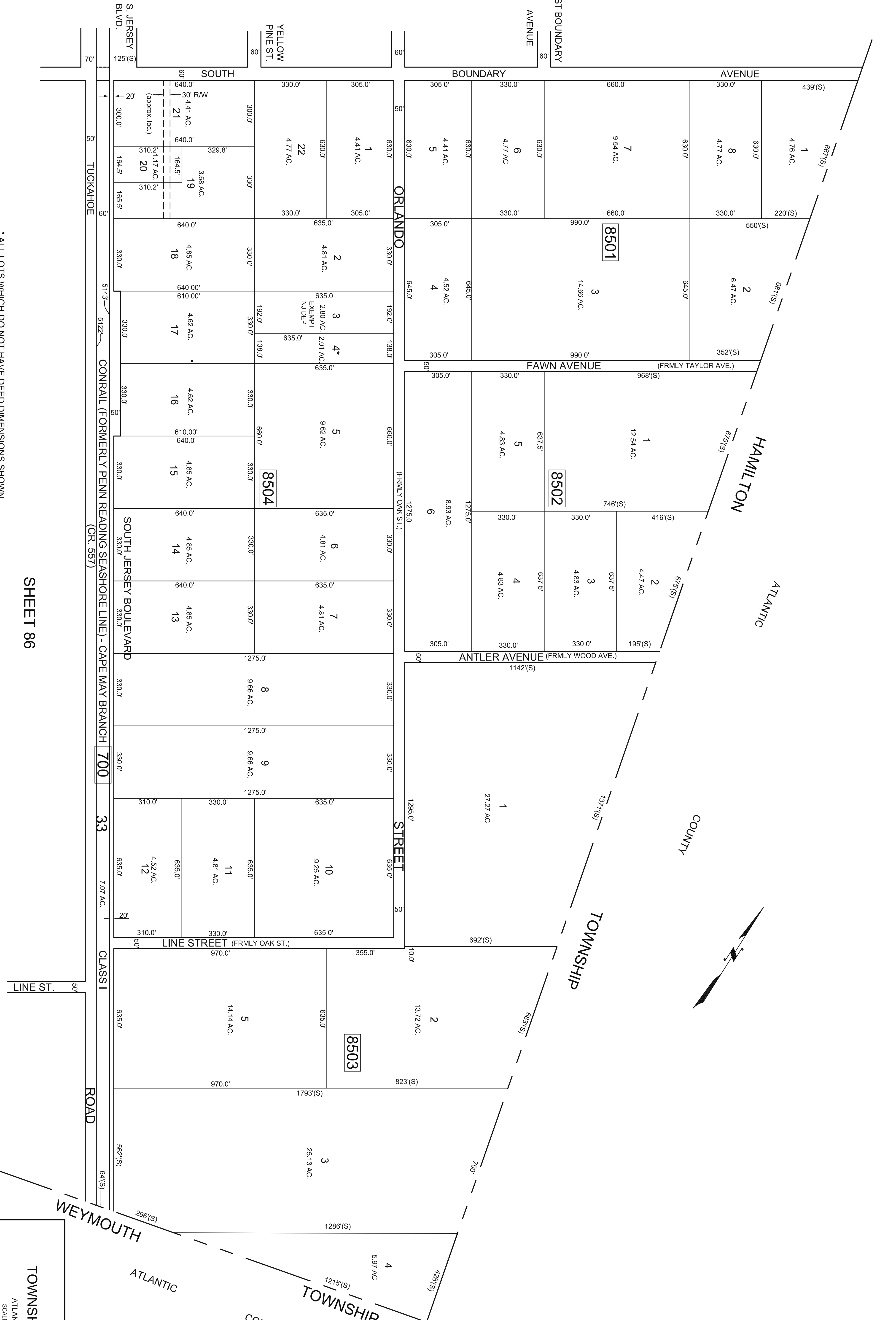
SHEET 86

SHEET 85

SHEET 82

SHEET 64

REVISIONS		
DATE	L.S. NAME	LIC. NO.



" ALL LOTS WHICH DO NOT HAVE DEED DIMENSIONS SHOWN WERE SCALED DURING TAX MAP PREPARATION IN 1989"

SHEET 86

* = EXEMPT-BUENA VISTA TOWNSHIP

THIS SHEET IS A DIGITIZED COPY OF THE TAX MAP ORIGINALLY PREPARED BY CHRIS R. REHMANN DATED JANUARY 1989. THE ORIGINAL APPROVED MAP IS ON FILE IN THE OFFICE OF THE BUENA VISTA TOWNSHIP TAX ASSESSOR.

TAX MAP
TOWNSHIP OF BUENA VISTA
 ATLANTIC COUNTY, NEW JERSEY
 SCALE: 1" = 200' DATE: JANUARY 1989
CHRIS R. REHMANN
 PROFESSIONAL ENGINEER & LAND SURVEYOR
 NEW JERSEY LICENSE NO. 17119
 865 SO. WHITE HORSE PINE
 HAMILTON, NEW JERSEY 08037

