



JOIN US FOR THE FIRST EVER !!



# RICHLAND VILLAGE FESTIVAL

Lenape Indian demonstrations, dancing & food

**SATURDAY, MAY 30, 2015**  
**10 AM to 6 PM**  
 (RAIN DATE MAY 31, 2015)

**4 BLOCKS OF FUN ON ROUTE 40 (Harding Hwy.)**



Huge Toy Show



Shoreline Vintage Antiques

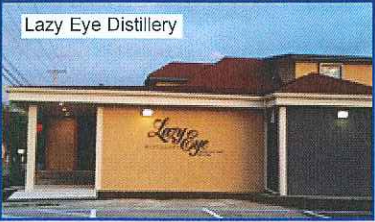


Restored Historic Caboose

Special Dedication 12:00 noon



Appearing Live: Stevi Leigh  
2 pm - 4 pm



Lazy Eye Distillery



Patcong Valley Model Railroad

Something for everyone!  
Bring the family!

**LIST OF EVENTS \* FREE ADMISSION!**

**10 am to 5 pm TOY SHOW**

8th Annual "It's A Toy Show" - 100 vendors  
Next to It's A Toy Store, 1256 Harding Hwy.

**10 am to 2 pm MISSING PIECE PUZZLE CO.**

Your picture on a puzzle. While U Wait. 404 Cedar Ave

**10 am to 6 pm - OPEN HOUSE**

Patcong Valley Model Railroad - 1308 Harding Hwy.

**11 am to 2 pm OLDIES CONCERT**

by 45 RPM live at Saw Mill Park Gazebo

**11 am to 3 pm - LENAPE INDIANS**

Dance performances 11 am & 2 pm, + crafts

**1 pm to 4 pm FREE ANTIQUE APPRAISALS**

Shoreline Vintage, 1349 Harding Hwy.

**1:30 pm to 5:30 pm CAR SHOW**

South Jersey Mustang Club - Open to all makes  
Muffler Rapping & Flame Throwing Contest - 3 pm  
FREE REGISTRATION \* TROPHIES

**2 pm to 4 pm LIVE RADIO BROADCAST**

by WVLT-FM 92.1 from Car Show

**2 pm to 4 pm LIVE CONCERT**

Stevi Leigh & featured artists at Saw Mill Park

**4 pm to 4:30 pm LIVE PERFORMANCE**

Victoria Cox, Miss Buena 2014

**ALL DAY ATTRACTIONS**

+Crafters display

+Community Yard Sale

+Antique dealers and historic display -

Buena Historical Society, 1266 Harding Hwy.

+BVT Environmental Commission display

+Train Rides - Cape May Seashore Lines

Children under 12 - \$5 Adults - \$10

+Fire Company Demonstrations & Displays

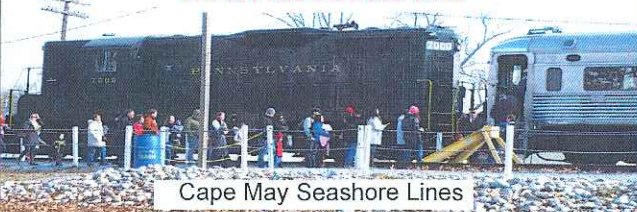
Richland Fire Co. Extrication - 12:30 pm

+Displays ACUA, Sheriff, Book Mobile, BVT EMS

+Race Cars & AutoCross Car Displays-

Sports Car Club of America-South Jersey Region

**TRAIN RIDES ALL DAY**



Cape May Seashore Lines

Sites available for \$10  
Call 856-697-2100, Ext. 8 for details and application or visit our website at [www.buonavistanj.com](http://www.buonavistanj.com)

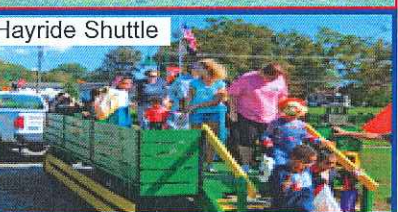


Performing Live 45 RPM  
11 am - 2 pm

Food Available at The Rail Tavern, The Richland Deli, Stewart's Root Beer Stand & other vendors



Car Show



Hayride Shuttle

Free Hay Wagon / Shuttle rides all day between all events!  
Plenty of free parking!

SPONSORED BY THE BUENA VISTA TOWNSHIP SPECIAL EVENTS COMMITTEE

\*Schedule is subject to change\*